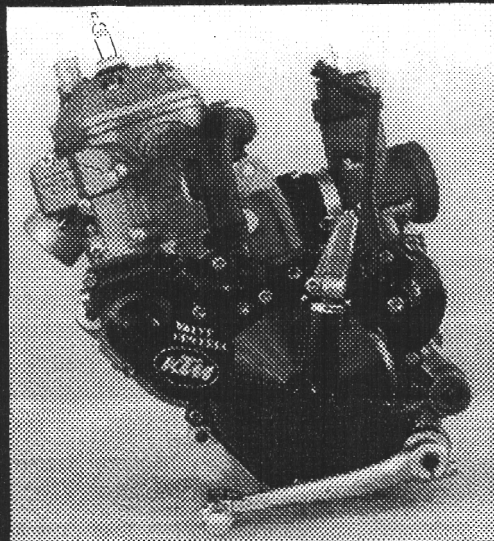




'88

**MOTOR TYP 502**  
**Engine Type 502**

**125 cc**



Art. Nr. 202.82  
1.88

**TECHNISCHE DATA**

MOTOR	125 VC	
BAUART	Fluessigkeitsgekuehler Einzylinder-Zweitakt-Ottomotor	
HUBRAUM	124,8 ccm	
BOHRUNG/HUB	54,25/54 mm	
LEISTUNG	MX: 27,2 kW (37 PS)	Enduro: 26,5 kW (36 PS)
NENNDREHZAHL	11500/min	11250/min
KRAFTSTOFF	Superkraftstoff Roz 98, Mit Zweitaktol Gemischt	
MISCHUNGS- VERHALTNIS	1:40 Bei Verwendung Von Hochwertigen Zweitaktoln. Im Zweifelsfall Setzen Sie Sich Bitte Mit Ihrem Importeur In Verbindung Oder Mischen Sie Vorsichtshalber 1:30.	
• MASS "X"	0,50 - 0,60 mm	
ZUENDZEITPUNKT v.OT	MX: 1,8 mm (19°)	Enduro: 1,4 - 1,5 mm (16,7 - 17,3°)
ZUENDKERZE	Bosch W 07 CS (W 370 S2S)	
ELEKTRODENABSTAND	0,6 mm	
GETRIEBESCHMIERUNG	0,5 Liter Motoroel SAE 20-50	
KUEHLFLUESSIGKEIT	1,1 Liter; Mischungsverhalten 2:1 - Frostschutzmittel: Wasser	
ZUENDANLAGE	Kontaktlos Gesteuerte Thyristor-Zuendanlage	
GENERATORLEISTUNG		Enduro: 6V 35/5/21 W
GENERATOR- ANSCHLUSSE	MX: kein Generator	Gelb 35W, Weiss 5W, Grun 21W

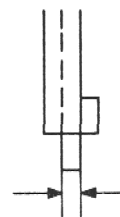
**TECHNICAL DATA**

Engine	125 VC	
Design	Liquid-cooled single-cylinder two-stroke engine	
Piston displacement	124.8 cc	
Bore/stroke	54.25/54 mm	
Performance max.	MX: 27.2 kW (37 HP)	Enduro: 26.5 kW (36 HP)
rpm at max. HP	11500	11250
Fuel	Super fuel, research octane no 98, mixed with two-stroke oil	
Oil/gasoline ratio	1:40 when using high-grade two-stroke competition oil. When in doubt, please contact your importer or use 1:30 mix ratio to be on the safe side.	
• Dimension "X"	0.50 - 0.60 mm	
Ignition timing BTDC	MX: 1.8 mm (19°)	Enduro: 1.4 - 1.5 mm (16.7 - 17.3°)
Spark Plug	Bosch W 07 CS (W 370 S2S)	
Electrode gap	0.6 mm	
Gear lubrication	0.5 litre engine oil SAE 20-50	
Coolant	1.1 litres mixture 2:1 of anti-freeze and water	
Ignition system	Solid-state thyristor ignition system	
Generator output		Enduro: 6V 35/5/21 W
Generator connections	MX: no generator	yellow 35W, white 5W, green 21W

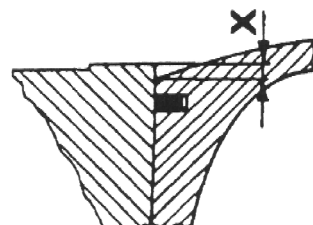
- UM NACH DEM WIEDERMONTIEREN DES ZYLINDERS DIE RICHTIGE EINSTELLUNG ZU ERHALTEN, IST FOLGENDES MASS "X" EINZUHALTEN (UNTERLEGEN VERSCHIEDEN STARKER ZYLINDER-FUSSDICHTUNGEN).

BEIM MESSEN IST DER ZYLINDER NIEDERZUSPANNEN UND DER KOLBEN AUF DEN OBEREN TOT-PUNKT ZU STELLEN.

DAS TIEFENMASS DER SCHIEBE-LEHRE SOLL 1,0 - 1,2 mm DICK SEIN.



1,0 - 1,2 mm



- In order to ensure a correct fit when the cylinder is reassembled, the dimension "X" must be maintained by using different thicknesses for the cylinder bottom gasket.

When measuring "X", the cylinder should be clamped down and the piston adjusted to the TDC position.

The callper shaft should have a thickness of 1.0 to 1.2 mm.

## GETRIEBEUEBERSETZUNGEN

## GEAR RATIOS

PRIMAER-UEBERSETZUNG	GETRIEBE-UEBERSETZUNG	ORIGINAL-UEBERSETZUNG HINTERRAD
18:61	MX Enduro	
	1. GANG 13:32 12:34	
	2. GANG 15:30 15:31	MX 13:50
	3. GANG 14:23 14:23	
	4. GANG 15:21 15:21	Enduro 13:48
	5. GANG 21:25 21:25	13:45
	6. GANG 20:21 20:20	

Primary Ratio	Transmission	Original Final Drive Ratio
18:61	MX Enduro	
	1st gear 13:32 12:34	
	2nd gear 15:30 15:31	MX 13:50
	3rd gear 14:23 14:23	
	4th gear 15:21 15:21	Enduro 13:48
	5th gear 21:25 21:25	13:45
	6th gear 20:21 20:20	

## VERGASER-GRUNDEINSTELLUNG

## BASIC CARBURETTOR SETTING

	E-GS	MX E-XC	
VERGASERTYPE	DELL'ORTO PHSB 35 MS	DELL'ORTO VHSB 37	carburettor type
HAUPTDUESE	220	225	main jet
NAELEDUESE	270 BM	272 DQ (270 DQ)	needle jet
LEERLAUFDUESE	55	50	idling jet
DUESENNADEL	K42	K42	jet needle
NADELPOSITION (VON OBEN)	3	2	needle position (from top)
GEMISCHREG. SCHRAUBE OFFEN	1 - 1,5 Umdr./turn	1,5 Umdr./turn	mixture adjustment screw open
SCHIEBER	40	40	throttle valve
STARTDUESE	70	60	starting jet

## TOLERANZEN - EINBAUSPIEL

## TOLERANCES AND FITTING CLEARANCES

KOLBENEINBAUSPIEL	0,06 mm	piston fitting clearance
KOLBENRING-STOSSPIEL	0,1 - 0,3 mm	piston ring end gap
PLEUELLAGER - RADIAL	0,021 - 0,032 mm	connecting rod bearing - radial clearance
GETRIEBEWELLEN - AXIALSPIEL	0,1 - 0,2 mm	transmission shaft end float
KUPPLUNGSDRUCKFEDERN - LAENGE	∅ 2,5 mm 1 = 38 mm	clutch springs - length

## DICHTUNGSSTAERKEN

## GASKET THICKNESSES

MOTORGEHAEUSE	0,3 mm	crank case
KUPPLUNGSDECKEL	0,3 mm	clutch cover
ZUENDUNGSDECKEL	0,5 mm	ignition cover
WASSERPUMPENDECKEL	0,5 mm	water pump cover
ZYLINDERFUSSDICHTUNG	NACH BEDARF/as required (0,05/0,1/0,15/0,3/0,5/0,75 mm)	cylinder bottom gasket
ZYLINDERKOPFDICHTUNG	O-RING 2 x 60	cylinder head gasket

## ANZUGSDREHMOMENTE

## TIGHTENING TORQUES

BUNDMUTTERN - ZYLINDERFUSS	M 8	29 Nm (3 kpm)	nuts - cylinder base
ZYLINDERKOPFSCHRAUBEN	M 7	18 Nm (1,8 kpm)	cylinder head bolts
BUNDMUTTER-SCHWUNG (LINKSGEWINDE)	M 12 x 1	54 - 59 Nm (5,5 - 6 kpm)	flywheel collar nut (LH thread)
MUTTER FUER PRIMAERRAD	M 14 x 1,5	88 - 93 Nm (9 - 9,5 kpm)	nut for primary sprocket
MUTTER FUER KUPPLUNGSMITNEHMER	M 16 x 1,5	88 - 93 Nm (9 - 9,5 kpm)	nut for inner clutch hub
MOTORGEHAUSE - UND DECKELSCHRAUBEN	M 6	8 Nm (0,8 kpm)	crankcase and cover bolts

# MOTORGEHAUSE / ENGINE CASE

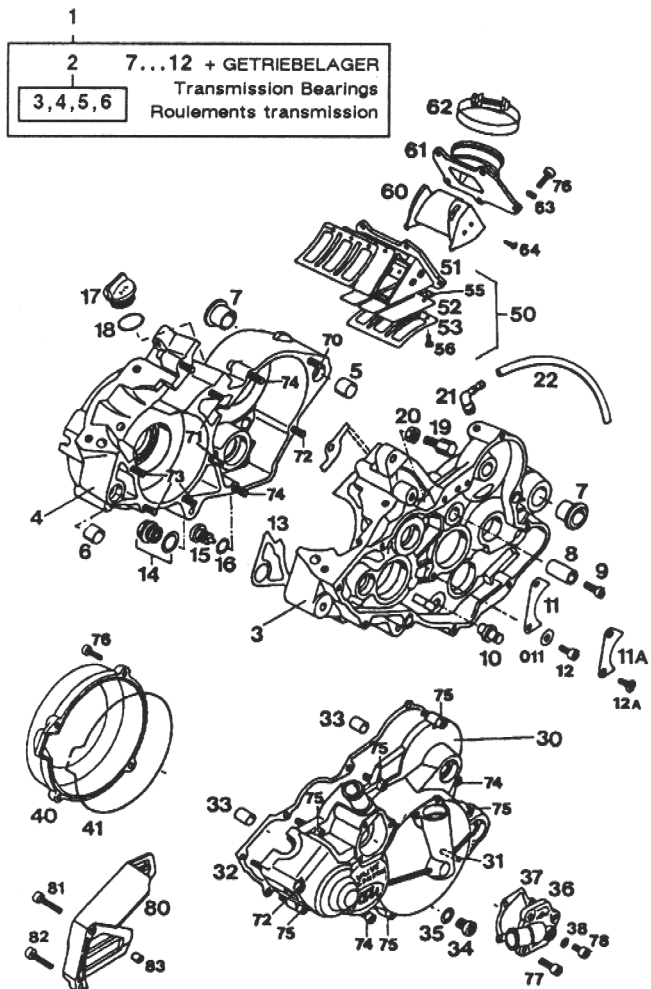


BILD FIG.	TEILENUMMER PART NUMBER	STK. QTY.	BILD FIG.	TEILENUMMER PART NUMBER	STK. QTY.
1	502.30.000.544	1	33	500.30.026.000	2
	BIS MOTOR NR./up to engine no. 8-502*03467*		34	490.30.029.000	1
			35	420.13.226.000	1
1	502.30.000.644	1	36	502.35.001.000	1
	AB MOTOR NR./from engine no. 8-502*03468*		37	502.35.002.000	1
			38	0603 062101	1
2	502.30.000.500	1	40	502.30.002.000	1
	BIS MOTOR NR./up to engine no. 8-502*03467*		41	565.30.002.150	1
			50	502.30.051.044	1
2	502.30.000.600	1	51	542.30.051.000	1
	AB MOTOR NR./from engine no. 8-502*03468*		52	502.30.052.000	2
			53	542.30.053.000	2
5	560.30.027.000	1	55	542.30.056.000	2
6	510.30.026.100	1	56	0084 040083	6
7	501.30.010.000	2	60	502.30.054.100	1
8	501.33.025.000	1	61	502.03.050.000	1
9	0912 060163	1	62	543.30.061.000	1
10	502.34.021.000	1	63	0137 060000	5
11	501.30.016.200	1,6 mm	64	0982 350133	4
11A	501.30.016.100	3 mm	X		
011	502.32.050.000	1	70	0912 060653	1
12	0912 060103	2	71	0912 060603	2
12A	0991 060122	X	72	0912 060553	2
13	502.30.039.000	1	73	0912 060503	3
14	490.30.095.000	1	74	0912 060303	4
15	580.38.020.000	1	75	0912 060253	7
16	580.38.022.000	1	76	0912 060203	9
17	580.30.020.000	1	77	0912 060163	3
18	0770 160030	1	78	0912 060083	1
19	560.32.019.000	1	80	545.30.060.000	1
20	0936 080003	1	81	0912 060303	1
21	510.30.022.000	1	82	0912 060253	1
22	310.07.007.001	0,3 m	83	740.03.021.000	2
30	502.30.001.100	1	--	502.30.100.000	1
31	0325 060240	1		DICHTUNGSSATZ/ gasket set	
32	502.30.025.000	1			

X = NACH BEDARF/as required

88-502.30.1

# ZYLINDER / CYLINDER

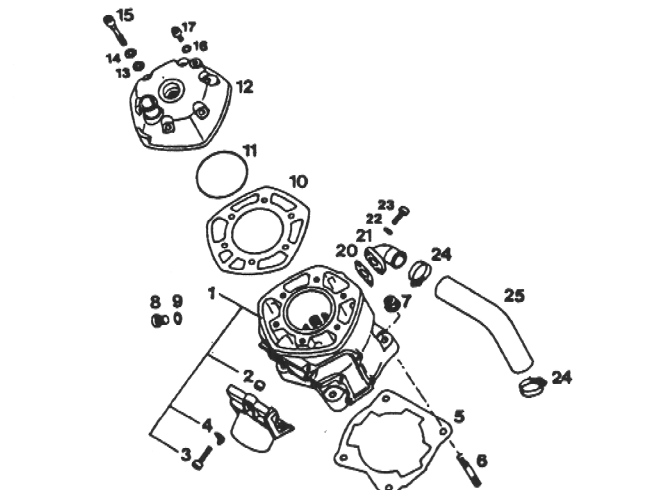


BILD FIG.	TEILENUMMER PART NUMBER	STK. QTY.	BILD FIG.	TEILENUMMER PART NUMBER	STK. QTY.	
1	502.30.005.144	1	10	502.30.036.500	1	
2	490.30.090.000	1	11	502.30.095.000	1	
3	0912 060253	3	12	502.30.006.100	1	
4	510.05.074.000	2	16	580.36.065.000	1	
5	502.30.030.005	0,05 mm	X	17	0912 060083	1
5	502.30.030.010	0,10 mm	X	13	500.30.680.000	6
5	502.30.030.015	0,15 mm	X	14	0125 070003	6
5	502.30.030.030	0,3 mm	X	15	500.30.079.000	6
5	502.30.030.050	0,5 mm	X	20	544.35.037.000	1
5	502.30.030.075	0,75 mm	X	21	502.35.006.000	1
6	502.30.043.000	4	22	0137 060000	2	
7	490.30.028.000	4	23	0912 060203	2	
8	490.30.029.000	1	24	100.01.020.000	2	
9	580.38.032.010	1	25	565.35.027.000	1	

X = NACH BEDARF/ as required

88-502.30.3

# AUSLASSTEUERUNG / VALVE CONTROL

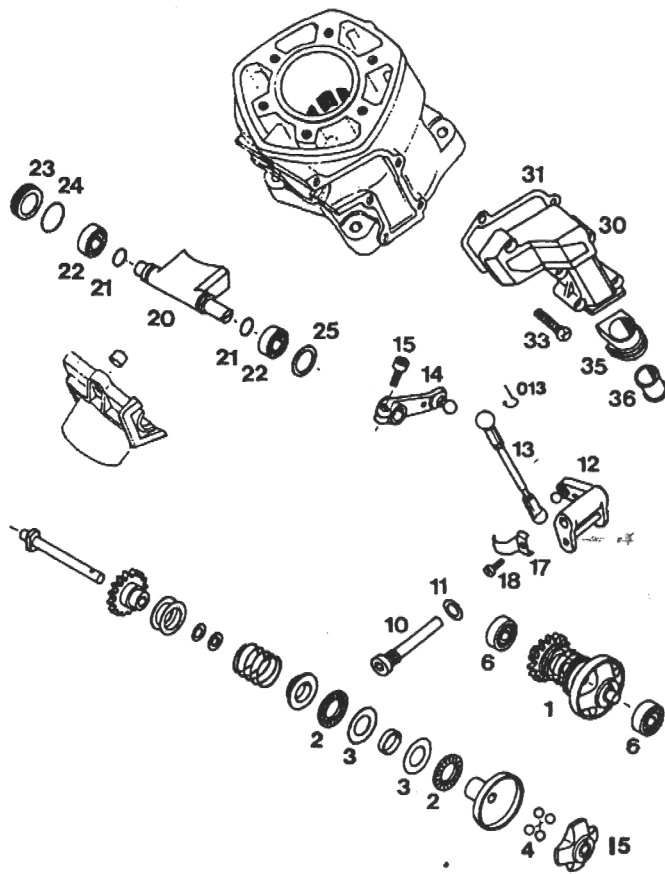


BILD. FIG.	TEILENUMMER PART NUMBER	STK. QTY.
1	502.37.050.044	1
2	545.37.099.000	2
3	545.37.098.000	2
4	545.37.097.000	4
5	0402 251380	1
6	0625 006086	2
10	545.37.030.000	1
11	420.13.226.000	1
12	502.37.024.044	1
13	502.37.026.044	1
1013	502.37.195.055	1
14	502.37.022.044	1
15	0912 050123	1
17	502.37.103.000	1
18	0084 040083	1
20	502.37.020.000	1
21	0770 100020	2
22	0625 638002	2
23	545.37.010.000	1
24	0770 180020	1
25	0988 162210	1
30	502.37.005.000	1
31	502.37.006.000	1
33	0966 060303	4
33	0966 060253	1
35	502.37.007.000	1
36	502.37.007.050	1

88-502.37.1

# VERGASER VHSB 37 MX / CARBURETTOR

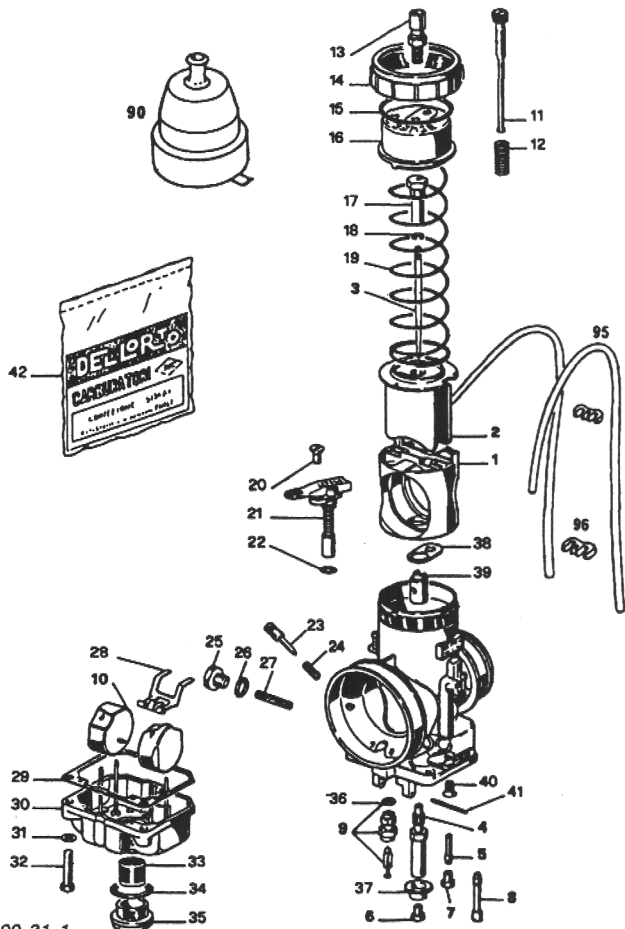


BILD. FIG.	TEILENUMMER PART NUMBER	STK. QTY.	BILD. FIG.	TEILENUMMER PART NUMBER	STK. QTY.
1-41	502.31.001.544	1	30	490.31.111.000	1
1	545.31.537.037	1	31	0127 050003	3
2	545.31.535.040	1	32	0084 050203	3
3	490.31.134.042	1	33	490.31.112.000	1
4	545.31.521.272	1	35	490.31.114.000	1
5	490.31.122.000	1	37	545.31.574.000	1
6	570.31.523.225	1	39	545.31.536.000	1
7	151.31.123.050	1	40	0966 040083	1
8	490.31.151.060	1	41	490.31.108.000	1
9	572.31.120.350	1	42	545.31.599.000	1
10	545.31.509.000	2		FIG. 15, 22, 26, 29, 34, 36, 38	
11	490.31.119.200	1	90	490.31.138.000	1
12	490.31.116.000	1	95	501.31.137.000	2
13	570.31.525.100	1	96	830.13.096.000	2
14	490.31.227.000	1			
16	490.31.127.000	1			
17	490.31.131.000	1			
18	0799 025055	1			
19	490.31.130.000	1			
20	0963 045103	1			
21	490.31.149.000	1			
23	490.31.117.000	1			
24	570.31.515.000	1			
25	491.31.513.100	1			
27	490.31.212.100	1			
28	490.31.106.000	1			

88-500.31.1

VERGASER PHSB 35 ENDURO / CARBURETTOR

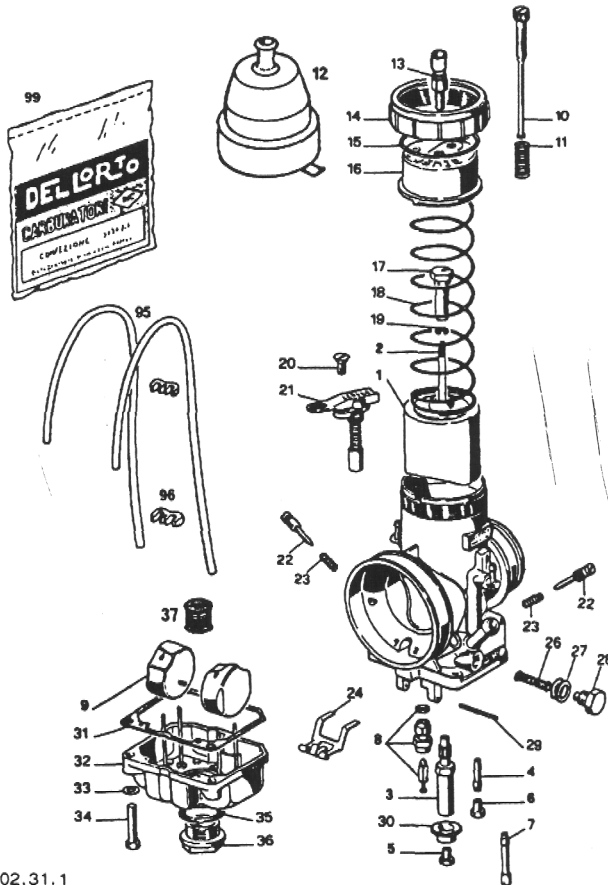


BILD. FIG.	TEILENUMMER PART NUMBER	STK. QTY.	BILD. FIG.	TEILENUMMER PART NUMBER	STK. QTY.
1-37	502.31.501.044	1	23	570.31.515.000	1
1	490.31.135.000	1	24	490.31.106.000	1
2	490.31.134.042	1	26	490.31.212.100	1
3	490.31.321.270	1	27	0603 082121	2
4	490.31.122.000	1	28	491.31.513.100	1
5	570.31.523.220	1	29	490.31.108.000	1
6	151.31.123.055	1	30	490.31.174.000	1
7	490.31.151.070	1	31	490.31.110.000	1
8	572.31.120.300	1	32	490.31.111.000	1
9	490.31.109.000	2	33	0127 050003	3
10	490.31.119.100	1	34	0084 050203	3
11	490.31.116.000	1	35	0603 182310	1
12	490.31.138.000	1	36	490.31.114.000	1
13	570.31.525.100	1	37	490.31.112.000	1
14	490.31.227.000	1	95	501.31.137.000	2
15	490.31.128.000	1	96	830.13.096.000	2
16	490.31.127.000	1	99	490.31.199.000	1
17	490.31.131.000	1			
18	490.31.130.000	1			
19	0799 025055	1			
20	0963 045103	1			
21	490.31.149.000	1			
22	490.31.117.000	1			

87-502.31.1

KURBELTRIEB / CRANKSHAFT, PISTON

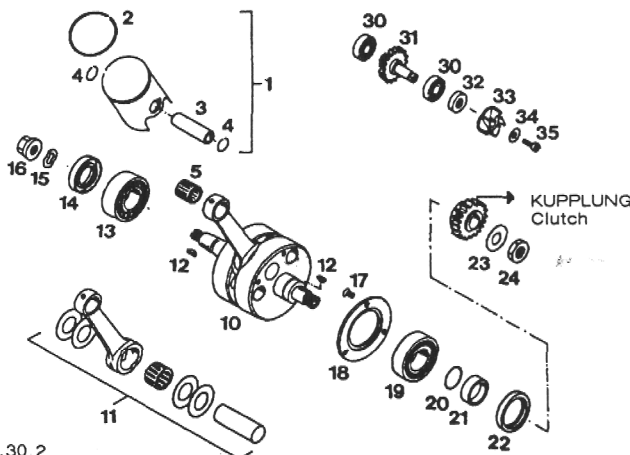


BILD. FIG.	TEILENUMMER PART NUMBER	STK. QTY.	BILD. FIG.	TEILENUMMER PART NUMBER	STK. QTY.
1	502.30.007.500	1	18	502.30.019.000	1
2	502.30.032.500	1	19	0625 062058	1
3	501.30.033.000	1	20	0770 250010	1
4	520.30.074.000	2	21	502.30.016.000	1
5	510.30.034.000	1	22	0760 304260	1
10	502.30.018.500	1	23	500.30.048.000	1
11	502.30.015.544	1	24	0936 140155	1
12	0888 030050	2	30	0625 060006	2
13	543.30.023.000	1	31	502.35.010.044	1
14	0760 254070	1	32	0760 102260	1
15	0137 120000	1	33	502.35.005.000	1
16	510.30.028.100	1	34	0349 000050	1
17	0963 050083	3	35	0912 050123	1

87-502.30.2

# KUPPLUNG / CLUTCH

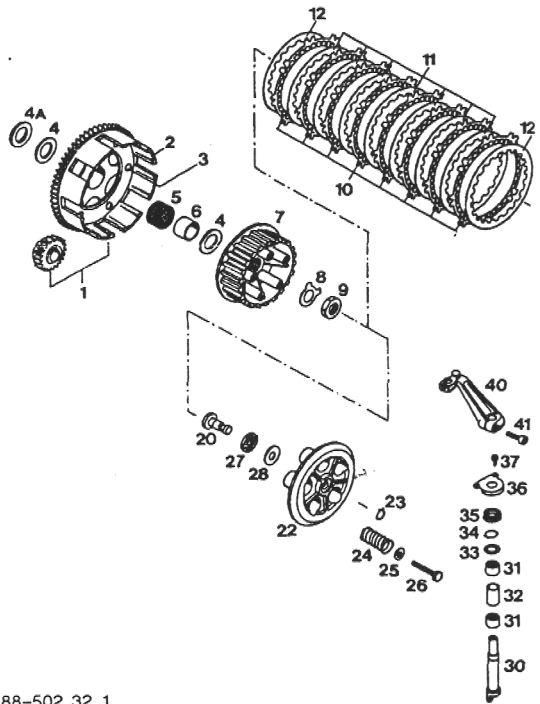
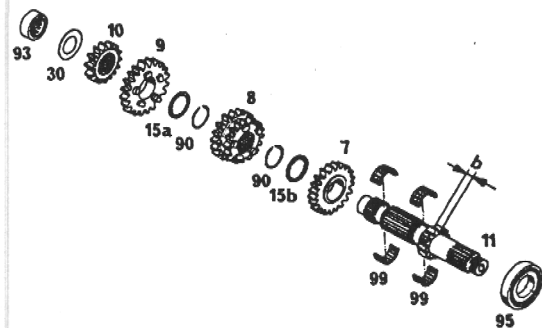


BILD. FIG.	TEILENUMMER PART NUMBER	STK. QTY.	BILD. FIG.	TEILENUMMER PART NUMBER	STK. QTY.
1	502.32.001.661	1	23	0471 100010	1
2	502.32.001.000	1	24	544.32.001.100	5
3	0660 050100	6	25	502.32.050.000	5
4	501.32.010.000	2	26	0933 060203	5
4A	501.32.010.100	X	27	560.32.030.052	1
BIS MOTOR NR./up to engine no. 8-502*03467*			28	560.32.030.050	1
5	501.32.095.000	1	30	502.32.015.200	1
6	501.32.096.000	1	31	502.32.095.000	2
7	501.32.002.200	1	32	502.32.090.000	1
8	501.32.018.100	1	33	502.32.091.000	1
9	0936 160155	1	34	0471 120010	1
10	501.32.005.100	8	35	545.32.093.000	1
11	501.32.009.100	7	36	502.32.013.000	1
12	501.32.009.200	2	37	0084 040083	2
20	502.32.017.000	1	40	502.32.016.000	1
22	501.32.003.100	1	41	0912 060163	1

1 mm  
1,4 mm

X = NACH BEDARF/as required

# GETRIEBE I / TRANSMISSION I

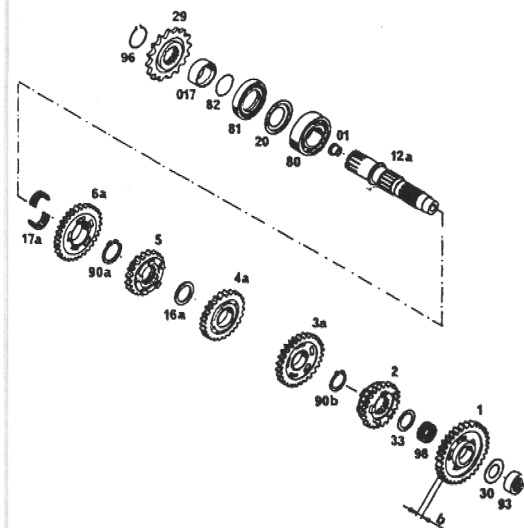


502.33.011.500	MX	b = 8,5 mm
502.33.111.500	Enduro	b = 8,5 mm
502.33.011.600	MX	b = 10,5 mm
502.33.111.600	Enduro	b = 10,5 mm

BILD. FIG.	TEILENUMMER PART NUMBER	STK. QTY.	BILD. FIG.	TEILENUMMER PART NUMBER	STK. QTY.
7	502.33.007.500	21Z 5.	11	502.33.111.600	12Z 1.
8	502.33.008.500	14/15Z 3./4.			ENDURO
9	502.33.009.500	20Z 6.		AB MOTOR NR./from	
10	502.33.010.500	15Z 2. MX		engine no. 8-502*03468*	
10	502.33.110.500	15Z 2.	15A	501.33.015.000	1
		ENDURO	15B	501.33.015.100	1
11	502.33.011.500	13Z 1. MX	30	560.33.030.000	1
	BIS MOTOR NR./up		90	501.33.090.000	2
	to engine no. 8-502*03467*		93	543.33.093.000	1
11	502.33.011.600	13Z 1. MX	95	0625 982040	1
	AB MOTOR NR./from		99	501.33.099.000	2
	engine no. 8-502*03468*				
11	502.33.111.500	12Z 1.			
		ENDURO			
	BIS MOTOR NR./up				
	to engine no. 8-502*03467*				

88-502.33.2

# GETRIEBE II / TRANSMISSION II



502.33.001.500	MX	b = 8 mm
502.33.101.500	Enduro	b = 8 mm
502.33.001.600	MX	b = 10 mm
502.33.101.600	Enduro	b = 10 mm

BILD. FIG.	TEILENUMMER PART NUMBER	STK. QTY.	BILD. FIG.	TEILENUMMER PART NUMBER	STK. QTY.
01	500.33.001.000	1	6A	502.33.006.500	30Z 2. MX
1	502.33.001.500	32Z 1. MX	6A	502.33.106.500	31Z 2.
	BIS MOTOR NR./up			ENDURO	
	to engine no. 8-502*03467*		12A	502.33.012.500	1
1	502.33.001.600	32Z 1. MX	16A	502.33.016.000	1
	AB MOTOR NR./from		17A	502.33.099.000	1
	engine no. 8-502*03468*		017	501.33.018.000	1
1	502.33.101.500	34Z 1.	20	560.33.020.000	1
	ENDURO		29	500.33.029.013	1
	BIS MOTOR NR./up		30	560.33.030.000	1
	to engine no. 8-502*03467*		33	500.33.033.000	1
1	502.33.101.600	34Z 1.	80	0625 062058	1
	ENDURO		81	0760 324770	1
	AB MOTOR NR./from		82	0770 020220	1
	engine no. 8-502*03468*		90A	0471 250020	1
2	502.33.002.500	25Z 5.	90B	0471 220175	1
3A	502.33.003.500	23Z 3.	93	543.33.093.000	1
4A	502.33.004.500	21Z 4.	96	520.33.096.000	1
5	502.33.005.500	21Z 6. MX	98	500.33.098.000	1
5	502.33.105.500	20Z 6.			
	ENDURO				

88-502.33.3

# KICKSTARTER / KICKSTARTER

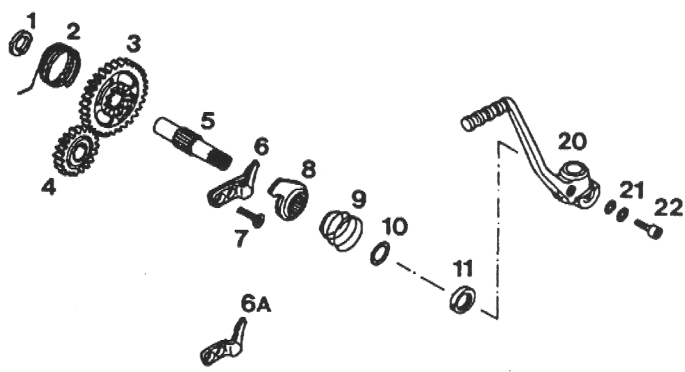


BILD. FIG.	TEILENUMMER PART NUMBER	STK. QTY.	BILD. FIG.	TEILENUMMER PART NUMBER	STK. QTY.
1	490.33.026.100	1	7	0991 060203	2
2	502.33.020.000	1	8	502.33.023.500	1
3	502.33.022.500	1	9	490.33.028.000	1
4	501.33.024.000	1	10	490.33.031.000	1
5	490.33.021.100	1	11	0760 142460	1
6	502.33.027.100		20	502.33.036.044	1
7 mm		1	21	502.33.041.000	2
6A	502.33.027.000		22	0912 060163	1
4 mm					

88-502.33.1

X = NACH BEDAR /as required

# ZUNDANLAGE / IGNITION SYSTEM

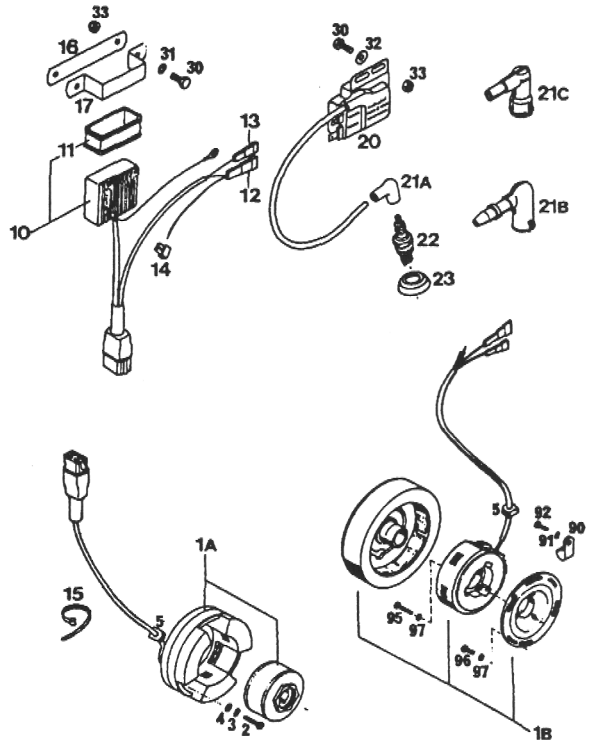


BILD. FIG.	TEILENUMMER PART NUMBER	STK. QTY.	BILD. FIG.	TEILENUMMER PART NUMBER	STK. QTY.
1A	501.31.102.100 MX	1	21A	510.31.010.100	1
1B	501.31.002.000 ENDURO	1	21B	510.31.010.200	1
2	0085 050203	3	21C	510.31.010.300	1
3	0137 050003	3	22	560.31.093.370	1
4	0125 050003	3	23	502.31.012.000	1
5	510.31.004.000	1	30	0933 060163	4
10	502.31.031.000	1	31	0125 060003	2
11	490.31.031.051	1	32	0021 060003	2
12	510.31.011.000	1	33	0985 060003	4
13	510.31.005.000	1	90	570.13.070.000	1
14	100.11.072.100	1	91	0125 050003	1
15	440.11.076.180	X	92	0912 050103	1
16	490.31.013.000	1	95	0085 040203	3
17	490.31.113.000	1	96	0085 040123	3
20	510.31.006.200	1	97	0137 040003	6

87-502.31.5

X = NACH BEDARF/as required

# SCHALTUNG / SHIFTING MECHANISM

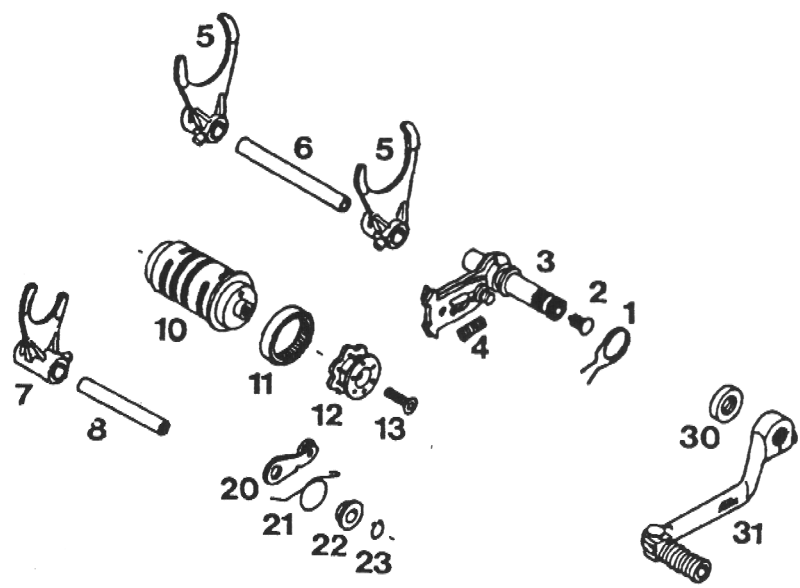


BILD. FIG.	TEILENUMMER PART NUMBER	STK. QTY.
1	501.34.014.000	1
2	544.03.135.000	1
3	502.34.006.000	1
4	490.34.009.000	1
5	502.34.002.000	2
6	502.34.004.000	1
7	502.34.001.000	1
8	502.34.003.000	1
10	502.34.012.500	1
11	501.34.026.000	1
12	502.34.015.000	1
13	0991 060203	1
20	502.34.024.044	1
21	502.34.023.000	1
22	502.34.020.000	1
23	0471 100010	1
30	0760 142460	1
31	501.34.022.000	1

88-502.34.1



# KUEHLSYSTEM / COOLING SYSTEM

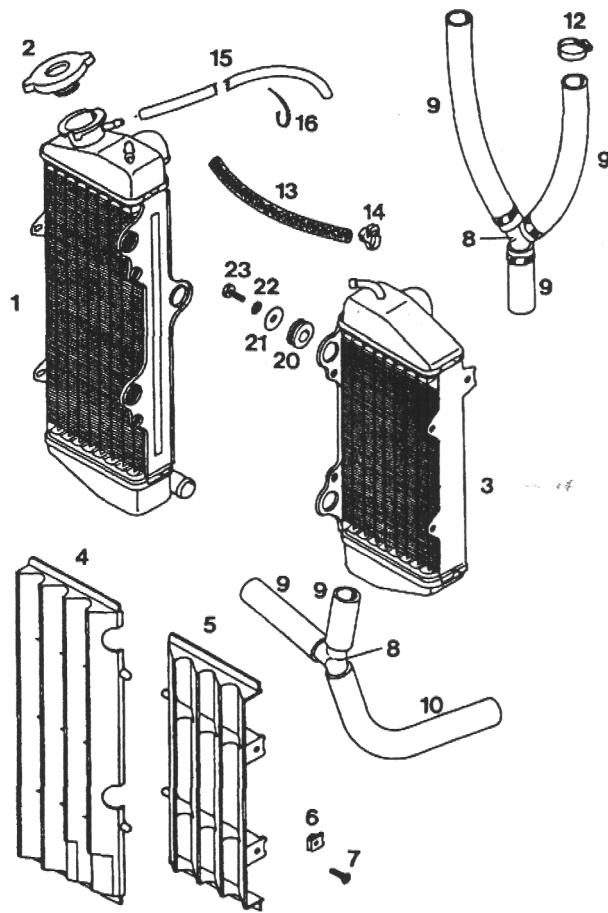


BILD. FIG.	TEILENUMMER PART NUMBER	STK. QTY.
1	502.35.008.000 (4.5038)	1
2	490.35.016.000	1
3	502.35.007.000 (4.5037)	1
4	545.35.134.000	1
5	545.35.034.000	1
6	502.35.033.000	4
7	0966 050203	4
8	565.35.026.000	2
9	565.35.025.001	0,75 m
10	565.35.027.000	1
12	100.01.020.000	12
13	544.35.024.001	0,18 m
14	544.35.023.100	2
15	550.07.016.001	0,45 m
16	440.11.076.155	X
20	410.01.052.000	6
21	510.06.097.000	6
22	0797 060003	6
23	0933 060163	6

87-502.35.1

X = NACH BEDARF/as required

# SPEZIALWERKZEUGE / SPECIAL TOOLS

HOLZGABEL  
SELBSTGEFERTIGT  
Wooden Fork Plate  
Home Made

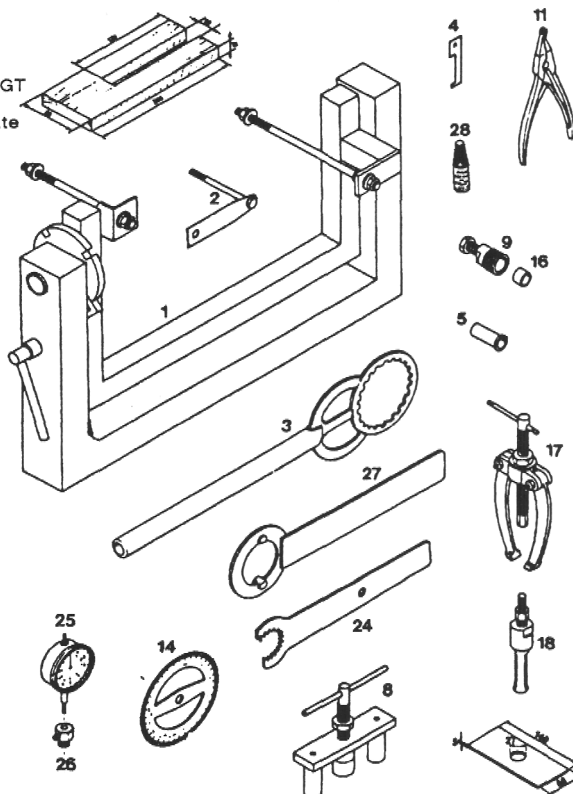


BILD. FIG.	TEILENUMMER PART NUMBER	STK. QTY.
1	560.12.001.000	1
2	501.12.001.050	1
3	501.12.003.000	1
4	502.12.022.100	1
5	565.12.005.014	2
8	502.12.008.000	1
9	510.12.009.000	M27x1
9	6 276 807	M26x1,5
11	510.12.011.000	1
14	510.12.014.000	1
16	510.12.016.000	1
17	151.12.017.000	1
18	151.12.018.100	1
24	502.12.004.000	1
25	501.12.013.000	1
26	501.12.030.000	1
27	544.12.012.000	1
28	6 899 786	1

LOCTITE BLAU 242/  
Loctite Blue

STEEL PLATE  
HOME MADE

STAHLPLATTE  
SELBSTGEFERTIGT

87-502.12.1



KTM Motor - Fahrzeugbau  
Aktiengesellschaft  
5320 Mattinghorn, Austria